

## Perspective

# Progress in multicellular human cardiac organoids for clinical applications

Hyeonyu Kim,<sup>1</sup> Roger D. Kamm,<sup>2,3</sup> Gordana Vunjak-Novakovic,<sup>4,5</sup> and Joseph C. Wu<sup>1,6,\*</sup><sup>1</sup>Stanford Cardiovascular Institute, Stanford, CA 94305, USA<sup>2</sup>Department of Biological Engineering, Massachusetts Institute of Technology, Cambridge, MA 02139, USA<sup>3</sup>Department of Mechanical Engineering, Massachusetts Institute of Technology, Cambridge, MA 02139, USA<sup>4</sup>Department of Biomedical Engineering, Columbia University, New York, NY 10027, USA<sup>5</sup>Department of Medicine, Columbia University, New York, NY 10032, USA<sup>6</sup>Department of Medicine, Stanford University, Stanford, CA 94305, USA\*Correspondence: [joewu@stanford.edu](mailto:joewu@stanford.edu)<https://doi.org/10.1016/j.stem.2022.03.012>

Advances in self-organizing cardiac organoids to recapitulate human cardiogenesis have provided a powerful tool for unveiling human cardiac development, studying cardiovascular diseases, testing drugs, and transplantation. Here, we highlight the recent remarkable progress on multicellular cardiac organoids and review the current status for their practical applications. We then introduce key readouts and tools for assessing cardiac organoids for clinical applications, address major challenges, and provide suggestions for each assessment method. Lastly, we discuss the current limitations of cardiac organoids as miniature models of the human heart and suggest a direction for moving forward toward building the mini-heart from cardiac organoids.

## INTRODUCTION

Cardiac organoids are three-dimensional (3D), self-organized structures that spontaneously assume the shape or function of the heart tissue and contain major cardiac cell types, including cardiomyocytes, cardiac fibroblasts, and endothelial cells. Recently, many studies have revealed how cardiac organoids can model human cardiac development and have shown substantial progress (Drakhlis et al., 2021; Hofbauer et al., 2021; Rossi et al., 2021).

The term “cardiac organoid” has been widely used in a number of studies using cardiac tissues formed by distinct methods. In most cases, cardiac organoids form spontaneously from self-assembled aggregates of pluripotent stem cells (PSCs) on anti-adhesion surfaces, which then differentiate into cardiac cells (Drakhlis et al., 2021; Hofbauer et al., 2021). In some cases, scaffolding materials are added (Kupfer et al., 2020) or differentiated cells are used (Richards et al., 2020) to form organoids. Cardiac spheroids or spherical microtissues are often formed by mixing pre-differentiated cardiomyocytes, endothelial cells, and cardiac fibroblasts in a ratio similar to the cellular composition of the heart (Polonchuk et al., 2017; Sharma and Gentile, 2021). However, the terms “organoid” and “spheroid” are often used interchangeably, and organoids have been broadly referred to as 3D cardiac microtissues. In this perspective, we will focus only on the organoids formed through spontaneous co-differentiation from PSCs into various types of cardiac cells.

The term “cardiac organoid” was first coined about 20 years ago (Zimmermann et al., 2002), but its use became popular in 2017 (Mills et al., 2017; Voges et al., 2017). However, using 3D tissues similar to cardiac organoids has a longer history than cardiac organoids, as the early *in vitro* cardiac differentiation protocols also utilized 3D embryoids (Maltsev et al., 1993). Like cardiac organoids, aggregates of PSCs, called embryoid bodies, were

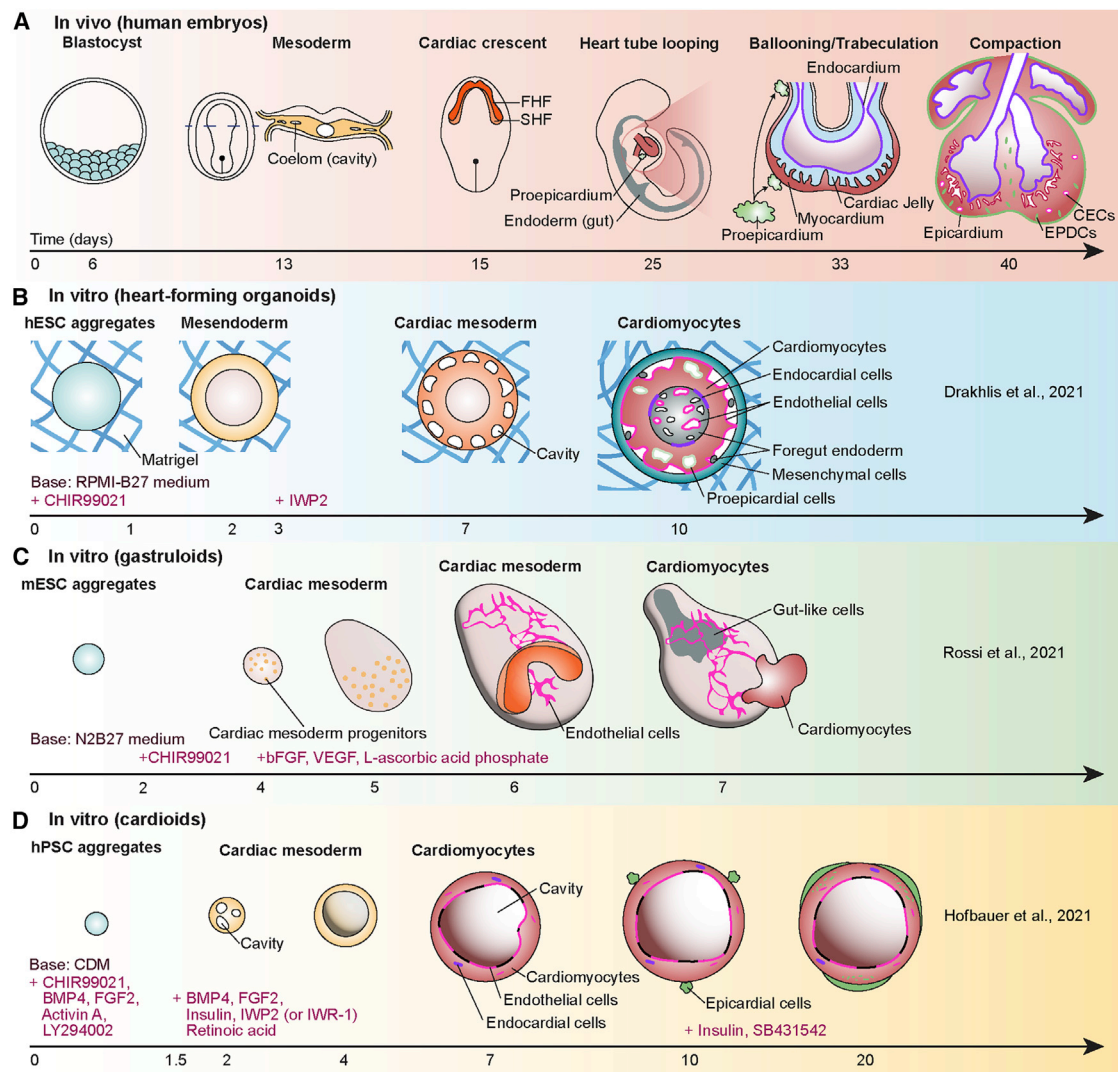
induced to differentiate into cardiomyocytes using cardiac differentiation media. While the main goal of these early studies was to achieve a high rate of cardiac differentiation (Mummery et al., 2012), recent studies using cardiac organoids aim to recapitulate 3D morphogenesis and pathological processes that are not captured in 2D culture through cell co-differentiation (Hofbauer et al., 2021). The recent advances were made possible by the development and commercialization of cutting-edge technologies such as human-induced pluripotent stem cells (hiPSCs), single-cell analysis (Paik et al., 2020a), and multi-photon microscopy that enable the analysis of complex multicellular organoids. Notably, the adult heart has an extremely limited ability of self-regeneration (Bergmann et al., 2009), making it difficult to obtain human cardiomyocytes for research. The advances in hiPSCs and cardiac differentiation protocols have facilitated cardiac research by providing cardiomyocytes and supporting cardiac cells *in vitro*, typically starting from a small sample of blood (Paik et al., 2020b).

Accordingly, there are a growing number of studies using cardiac organoids. In particular, 2021 saw many remarkable studies being reported (Drakhlis et al., 2021; Hofbauer et al., 2021; Rossi et al., 2021). In this perspective, we will introduce the recent major advances and perspectives in cardiac organoids and their applications, including studies of developmental biology, drug testing, disease modeling, and transplantation. For more successful clinical applications, we will also examine the limitations of cardiac organoids by evaluating their key functions and features. Finally, we will discuss overcoming the current challenges and the future directions, including obtaining mini-hearts starting from organoids.

## MODELING EARLY CARDIOGENESIS

Self-organizing cardiac organoids that mimic cardiogenesis were reported in 2021 (Figure 1). Drakhlis and colleagues





**Figure 1. Comparison of recently reported cardiac organoids *in vitro* with cardiac development *in vivo***

(A) Early cardiac development of human embryos (first 40 days). FHF, first heart field; SHF, second heart field; EPDCs, epicardial-derived cells; CECs, coronary endothelial cells.

(B) Heart-forming organoids mimicking an interplay with foregut endoderm during development. RPMI-B27 medium, Roswell Park Memorial Institute 1640 medium containing B-27 supplement; IWR-2, an inhibitor of Wnt production 2.

(C) Self-assembled gastruloids with cardiac crescent- and heart tube-like regions. N2B27 medium, a half-half mixture of Dulbecco's modified essential medium/Ham's F-12 medium containing N2 supplement and Neurobasal medium containing B-27 supplement; bFGF, basic fibroblast growth factor; VEGF, vascular endothelial growth factor.

(D) Chamber-like cardioids with endocardium, myocardium, and epicardium-like layers. BMP4, bone morphogenetic protein 4; FGF2, fibroblast growth factor 2.

induced the formation of mesoderm by CHIR99021 and subsequent cardiac specification by IWP2, after embedding aggregates of human embryonic stem cells (hESCs) or hiPSCs in Matrigel (Drakhlis et al., 2021). They used the MIXL1-GFP hESC reporter line and the NKX2.5-eGFP hESC reporter line to monitor the induction of mesendoderm in the primitive streak during gastrulation and cardiac lineage cells, respectively. During organoid differentiation, MIXL1 showed a transient expression pattern between day 2 and day 4, and one of the earliest markers of the cardiac lineage, NKX2.5 (Behrens et al., 2013), was expressed in a ring shape from day 7. On day 10, the inner layer contained endothelial cells and foregut-like cells with microvilli, and the middle layer consisted of mostly cardiomyocytes with

some epicardial cells. The outer layer in these organoids contained mesenchymal cells and liver cells. Notably, a small number of NFATC1+ endocardial cells were seen at the interface of the inner and middle layers. This study also showed formation of cavities in cardiac organoids. In particular, the cavities in the middle layer at day 4 mimicked the formation of coeloms in the mesoderm during human cardiac development (Figures 1A and 1B), and those in the inner layer at day 10 mimicked foregut cavities and vascular lumina.

Obtaining cardiac cells with foregut and liver cells in a single organoid provided an opportunity to study multi-organ interactions during cardiac development. However, obtaining a large proportion of non-cardiac cells such as foregut endoderm may

be due to the embedding of organoids in Matrigel, a tumor matrix preparation that contains numerous growth factors, with batch-to-batch variability. When cardiac organoids were embedded in growth-factor-reduced Matrigel and collagen I, the layered NKX2.5 pattern did not appear, or the cells died (Drakhlis et al., 2021). In the future, elucidating which particular substance in Matrigel affects cardiogenesis, or the use of alternate cues, would greatly improve the robustness and reproducibility of organoid models. As an example, Silva et al. also recently demonstrated multilineage organoids with co-emergence of cardiac and gut cells without Matrigel using epicardial-permissive medium starting from day 7 of cardiac differentiation (Silva et al., 2021).

In a study published in 2021, Rossi and colleagues captured self-organized cardiogenesis in embryonic organoids, which they call gastruloids (Rossi et al., 2021). The mouse embryonic stem cell (mESC) aggregates were first differentiated in the neural stem cell culture medium containing CHIR99021. To also obtain endothelial cells, basic fibroblast growth factor (bFGF), L-ascorbic acid phosphate, and vascular endothelial growth factor (VEGF) were added to the differentiation medium. On day 6, this protocol resulted in the emergence of an *in vivo* cardiac crescent-like spatial arrangement of first heart field (FHF) and second heart field (SHF) progenitor cells, using a dual FHF/SHF reporter mESC line (HCN4:GFP;TBX1-Cre:RFP) (Figure 1C). The authors claimed that the cardiac crescent-like structure formation and subsequent morphological changes of cardiac lineage cells during days 6–7 could be aligned to the morphogenesis of embryonic cardiac development between E7.5 and E8.5. The emergence of FHF and SHF cells during cardiac lineage specification of hPSCs in both 2D culture (Zhang et al., 2019) and 3D cardiac organoids (Lewis-Israeli et al., 2021) has been also reported by other groups.

Besides cardiac lineage cells, the organoids reported by Rossi and colleagues contained networks of endothelial cells and primitive gut tube-like structures (Rossi et al., 2021). In these organoids, a total of 32 cell types were identified, including three germline derivatives and cardiomyocytes, on days 4–7 using single-cell RNA sequencing (scRNA-seq) analysis. In addition, trajectories obtained from RNA velocities showed the gene expression sequence of MESP1 (the earliest marker of cardiac progenitors; Zhang et al., 2017), NKX2.5 (a marker of cardiac progenitor cells), HCN4 (a marker of FHF progenitor cells), and RYR2 and  $\alpha$ -actinin (markers of mature cardiomyocytes) over time in their organoids during differentiation. scRNA-seq results also captured NFATC1+/NPR3+ endocardial cells in the organoids. However, the organoids contained mostly non-cardiac cells and only a few cardiomyocytes, as the differentiation cues did not specifically target cardiac cells, but instead targeted gastruloids to mimic more general embryonic development. As different cell lines may have divergent differentiation trajectories, this protocol may in fact work better with organoids made from human cells.

In a resource paper by Hofbauer and colleagues, the authors presented remarkable cavity formation in human PSC-derived cardiac organoids (Hofbauer et al., 2021) (Figure 1D), with the presence of major cell types of the heart, including cardiomyocytes, endocardial cells, and epicardial cells. From around day 2.5 of differentiation, when organoids resembled cardiac meso-

derm, many small cavities were created that subsequently merged to form large cavities. These organoids showed that the cavity formation requires HAND1 at the beginning of differentiation, possibly because HAND1 expression is necessary for the development of cardiac mesoderm. Accordingly, the cavity formation is most similar to the coelom formation in cardiac mesoderm (Figure 1A), as in the case of Drakhlis et al. (Drakhlis et al., 2021) (Figure 1B). In the inner part of these cavities, the lining of CHD5+ or PECAM1+ endothelial cells was found. In addition, the expression of NFATC1, an endocardial cell marker, was confirmed in organoids from proteomic and scRNA-seq data. Furthermore, to mimic the epicardium from the pro-epicardial cell clump on the surface of the developing heart, Hofbauer et al. added the epicardial cells to the surface of their organoids on around day 8 and let them penetrate the tissues. These studies show the potential for cardiac organoids to be used as models of the human fetal heart to recapitulate some aspects of early cardiac development, such as cardiac mesoderm, cardiac crescent, and other major cell types of the fetal heart.

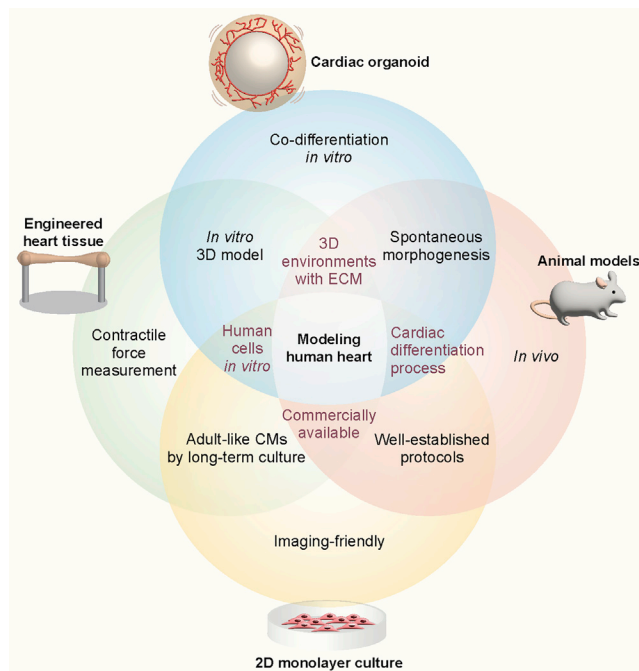
## DISEASE MODELING

Many studies, including the aforementioned cases, have used 3D cardiac organoids to recapitulate the pathology of cardiac diseases in an environment more similar to the native heart than 2D monolayer culture. As CRISPR-Cas9 genome editing is integrated into organoid technology, it is possible to generate disease-carrying mutations in healthy cells or to rescue patients' cells in organoids (Gopal et al., 2020). Hofbauer et al. (Hofbauer et al., 2021) knocked out HAND1 and NKX2.5 in a hESC line using CRISPR editing to model human cardiac malformations, such as hypoplastic left heart syndrome. Interestingly, knockout (KO) of either HAND1 or NKX2.5 reduced the size of cardiac organoids and the cavity formation, but later cardiomyocyte specification (TNNT2+) was still functional. Hofbauer and colleagues also generated a developmental injury model by performing localized cryoinjuries in cardiac organoids, which induced the extracellular matrix (ECM) accumulation by endothelial cells or epicardial fibroblast-like cells (Hofbauer et al., 2021).

Drakhlis et al. also constructed cardiac organoids using a NKX2.5 KO hESC line and found that NKX2.5-KO resulted in reduced tissue compaction, reduced adhesion between cardiomyocytes, and larger size of cardiomyocytes, which were similar to non-compaction by trabecular overgrowth and hypertrophy captured in NKX2.5 KO mice (Pashmforoush et al., 2004). Lewis-Israeli et al. cultured cardiac organoids with high glucose and insulin to study the effects of pre-gestational diabetes on cardiac development (Lewis-Israeli et al., 2021) and showed that the diabetic condition resulted in larger organoids, arrhythmia, and lower oxygen consumption. Cardiac diseases caused by developmental abnormalities have been modeled by cardiac organoids. However, current cardiac organoids are similar to fetal hearts, so that modeling of adult heart diseases such as those caused by aging is not yet achieved.

## DRUG TESTING

Cardiac organoids have unique advantages that make them suitable for use as drug testing platforms compared with



**Figure 2. The intersections and unique advantages of cardiac organoids and human heart models for drug testing and disease modeling**

Compared to 2D monolayer cultures, animal models, and engineered heart tissues, cardiac organoids can uniquely provide a platform to investigate spontaneous 3D cardiogenesis through co-differentiation under well-controlled *in vitro* conditions.

conventional heart models (Figure 2). 2D monolayer culture of human cells and *in vivo* animal models are widely used and well-established methods in preclinical studies during drug development. 2D monolayer culture is a high-throughput system because the preparation and culture are relatively simple and allow cells to be observed at high magnification using a microscope. However, this model may present an oversimplified condition in which many key features in human physiology, such as natural structure and cell-ECM interactions, are not recapitulated (Kapałczyńska et al., 2018; Wnorowski et al., 2019). In addition, animal models provide complex *in vivo* environments that *in vitro* models have not yet fully leveraged. Limitations of cardiac animal models are their genetic and functional differences from humans, low throughput, and ethical concerns (Solodow et al., 2013).

Recently, there have been many meaningful advances in drug testing using engineered heart tissues (EHTs), in which both ends of long rod-shaped 3D cardiac tissues are connected to silicone posts (Cho et al., 2021; Ronaldson-Bouchard et al., 2018). EHTs are mainly prepared by encapsulation of hPSC-derived cardiomyocytes and fibroblasts differentiated in 2D culture into ECM hydrogel, such as fibrin and collagen I (Abilez et al., 2018). This model allows measurements of contractile force (Figure 2), but it is difficult to maintain the tissue without a protease inhibitor in the culture media due to the pre-tension in the tissues generated by the two posts. Furthermore, it is hard to mimic cardiogenesis using EHTs because they are made of already differentiated cells that are at a fetal level of maturity. The

throughput of these systems is not high due to the preparation of the casting molds and the large number of cells for each tissue (~1.5 million cells) (Mannhardt et al., 2017).

Cardiac organoids often exhibit 3D emergent behaviors resulting from cell-cell and cell-ECM interactions in 3D, such as cardiogenesis, not seen in 2D cultures. Organoids can be formed by inducing co-differentiation from hPSCs to multiple cell types in 3D cardiac organoids. These self-organizing cardiac organoids provide much higher throughput than EHTs or animal models in drug screening because the fabrication process is simpler and the number of cells per organoid is much smaller (~5,000 cells) (Drakhlis et al., 2021). In addition, organoids enable personalized medicine approaches using hiPSCs from patients and evaluation of drug effects on human cardiac development and gene expression pattern. Due to these advantages, cardiac organoids are already used in drug testing for cardiovascular diseases (Lee et al., 2020; Paik et al., 2020b) and may provide new information unavailable from other heart models in traditional preclinical trials. However, there are no standardized organoid protocols or commercially available products yet, as cardiac organoid studies are still in the early stage.

## TRANSPLANTATION

In the near future, organoids containing major cell types of target organs may become available for transplantation. In 2018, Mansour and colleagues achieved progressive neuronal maturation of the organoid and growth of axons to multiple regions of the host brain by transplanting hESC-derived brain organoids into adult mouse brain (Mansour et al., 2018). In the same year, Cortez and colleagues transplanted hiPSC-derived intestinal organoids into the mouse mesentery, and 82% of transplanted intestinal organoids were successfully engrafted after 10 weeks (Cortez et al., 2018). Although research on cardiac organoid transplantation has only just begun (Varzideh et al., 2019), we speculate that similar approaches for transplantation of brain and intestinal organoids may be applied to cardiac organoids. Recently, transplantation of cardiac spheroids made from hESC-derived cardiac progenitor cells, endothelial cells, and mesenchymal stem cells into the peritoneal cavity of mice significantly improved the maturity of cardiomyocytes (Varzideh et al., 2019). In addition, it has been shown that hPSC-derived cardiomyocytes, a major component of cardiac organoids, can be used as cell therapy for replenishing damaged myocardium (Oikonomopoulos et al., 2018; Pushp et al., 2021). As an example, transplantation of hiPSC-derived cardiomyocytes into the infarcted hearts of mice showed significant functional improvement by cell therapy (Funakoshi et al., 2016). Also, clinical trials involving the use of hiPSC-derived cardiomyocyte sheets (ClinicalTrials.gov Identifier: NCT04696328) and hESC-derived cardiomyocytes (ClinicalTrials.gov Identifier: NCT05068674) for treating ischemic cardiomyopathy are now underway in Japan and the U.S. As cardiac organoids contain endothelial cells for pre-vascularization, they are expected to be advantageous for integration into host tissues.

However, the immaturity of the transplanted cells can still cause arrhythmias (Liu et al., 2022; Neofytou et al., 2015; Romagnuolo et al., 2019). Therefore, further studies will be needed to find effective methods for maturation of cardiac organoids, as



they currently are at fetal stages of development. For cardiac organoids to be practical for transplantation into the heart, they need to be fabricated and cultured in chemically defined environments and under good manufacturing practices (GMPs). To achieve this, we should find a GMP-compatible replacement for animal-derived materials, such as Matrigel and basement membrane extract, which have been widely used for both 2D and 3D hPSC culture. Also, using effective mass-production methods for organoids such as stirred suspension culture will substantially increase throughput compared to the conventional static adherent culture (Chen et al., 2015; Marsee et al., 2021).

### ASSESSING CARDIAC ORGANOID FOR CLINICAL APPLICATIONS

For cardiac organoids to be utilized in various practical applications as aforementioned, it is necessary to accurately evaluate their important functions and monitor their biological status. Previously, factors related to contractility, morphology, electrophysiology, metabolism, and gene expression have been commonly used to evaluate 2D cultured cardiomyocytes (Garg et al., 2018; Zhang et al., 2021a). However, these assays and techniques mostly require modification or extra preparation steps for application to 3D cardiac organoids. Therefore, we will discuss the challenges and solutions for integrating conventional measurement methods into 3D cardiac organoid research.

#### Contractility and morphological features

EHTs allow non-contact, real-time measurements of the contractile force using two elastic posts connected to cardiac tissues. Because cardiac organoids do not have a force sensor, their contractility should be analyzed based on morphological information. To quantify the contractility, the beating of cardiac organoids is recorded as a video through a microscope and then analyzed with a motion vector algorithm program (Huebsch et al., 2015). This provides information that has been commonly used in traditional cardiomyocyte studies, such as contraction magnitude, beating rate, and beating velocity. However, unlike 2D monolayer culture, too-strong beating of cardiac organoids that are placed on an anti-adhesion surface can change their position and orientation due to the beating. This should be considered in the analysis so that it is not miscalculated as contraction magnitude.

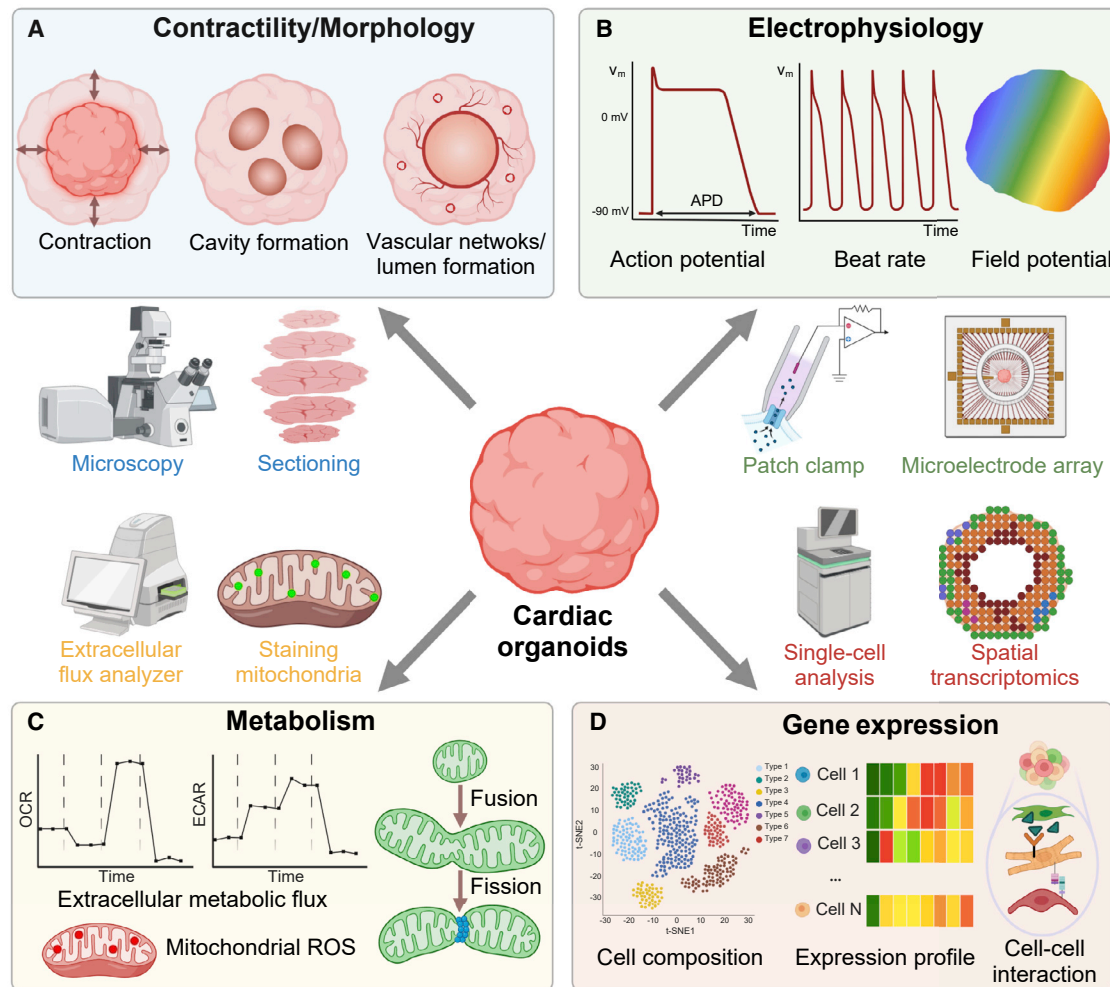
Some 3D morphological parameters of cardiac organoids could not be assessed in 2D cultures, such as cavity formation during cardiogenesis, wall thickness, ejection fraction by contraction, and lumen formation by endothelial cells (Figure 3A). However, because cardiac organoids consist of very dense tissues, the detailed structure and most morphological features deep inside the organoids are not easily visible in real-time. Therefore, we need advanced imaging techniques to capture more detailed morphological features throughout cardiac organoids.

To visualize the beating of the *in vivo* heart in humans or animals, an echocardiogram using ultrasound waves has been used. The echocardiogram has a high temporal resolution (<5 ms) but poor spatial resolution (0.5–2 mm) for the size of cardiac organoids (0.3–1 mm) (Lin and Alessio, 2009). Confocal microscopy has a high spatial resolution (up to 180 nm) (Schermel-

eh et al., 2010), but it is difficult to observe cells at a depth of more than 0.3 mm due to the scattering of photons in the dense cardiac organoids. In addition, sample-enhancing methods such as clearing cannot be applied to increase the working depth for live organoid imaging. This severe scattering issue also increases scan time in the deep inner part of cardiac organoids, because the averaging of signal over a certain percentage of the pixel time is required due to a low signal-to-noise ratio. The scan time of confocal microscopy (>4 s/plane, a 512 × 512 image) is usually much longer than the typical heartbeat rate (<1 beat/s) (Smith, 2011); thus it is challenging to capture internal structural changes during the beating of live cardiac organoids using confocal microscopy.

Light-sheet microscopy, which has a relatively shorter scan time than confocal microscopy with point scanning, is also widely used for organoid imaging. However, light-sheet microscopy is limited to scattering within a 3  $\mu$ m depth into cardiac organoids. Two-photon or multi-photon microscopy using long wavelengths could be used to achieve less scattering and less tissue damage deep in the organoids. By combining the fast scan time of light-sheet microscopy with the deep penetration of two-photon microscopy, Richards and colleagues assessed calcium transient profiles of live cardiac organoids using a customized two-photon scanned light-sheet microscope (Richards et al., 2020). This imaging technique allowed monitoring the change in fluorescence of the calcium indicator GCaMP6 in planes deeper than 50  $\mu$ m (using 4- $\mu$ m-thick optical sections) with high temporal resolution (20 ms). More recently, a preprint on optical coherence tomography described the internal structures of cardiac organoids such as cavities with a spatial resolution of about 3.5  $\mu$ m and a temporal resolution of 1 ms without sectioning or staining (Ming et al., 2022). Despite advances in imaging techniques, full scanning of beating cardiac organoids with fluorescence markers at high temporal and spatial resolutions has not been achieved. The use of reporter lines for targeting cell types or software algorithms to supplement the current limitations of 3D imaging can help enhance the quality of real-time organoid imaging.

End-point imaging that allows long scan time and tissue fixation can provide more options for imaging at high spatial resolutions. In particular, high resolution is required when the cell type of interest is present only in very small numbers within the organoids. One of the techniques that can be applied to obtain a full scan of cardiac organoids with a high spatial resolution is tissue clearing, a technique that significantly increases tissue transparency. There are several clearing methods. Hydrophobic methods usually shrink tissues, and hydrophilic and hydrogel-based methods result in tissue expansion (Ueda et al., 2020). Due to these structural changes, the selection of tissue clearing method should be carefully considered depending on which morphological parameters in the organoid are of most interest. It also requires optimization of the clearing protocol prior to application to organoids in each research group, which may take a lot of time and cost. Lastly, sectioning causes less deformation than clearing, but can be challenging because of the small size of cardiac organoids (only about 0.3–1 mm in diameter) (Hofbauer et al., 2021). In addition, their light color makes them almost invisible in paraffin or frozen optimal cutting temperature (OCT) compounds.



**Figure 3. Readouts and methods to assess cardiac functions**

(A) Contractility/morphology, (B) electrophysiology, (C) metabolism, and (D) gene expression. OCR, oxygen consumption rate; ECAR, extracellular acidification rate; ROS, reactive oxygen species.

### Electrophysiology

The electrophysiology of cardiomyocytes plays an important role in identifying cardiac mechanisms, diseases, and potential therapies (Hayes et al., 2019). The gold standards for assessing electrophysiological characteristics of cardiomyocytes in 2D monolayer culture are the manual patch-clamp and multielectrode array (MEA) techniques, as they provide very high temporal resolution (>10 kHz). However, the throughput of the manual patch-clamp that can record at a single-cell resolution is too low for a high-throughput organoid system (Gao et al., 2021). On the other hand, MEA measures an extracellular field potential of multiple organoids or cells at once and also provides information on action potential propagation (Navarrete et al., 2013; Passaro and Stice, 2021) (Figure 3B). In contrast, patch-clamp has a higher spatial resolution (<1  $\mu\text{m}$ ) than MEA (>30  $\mu\text{m}$ ) (Gu et al., 2002; Müller et al., 2015) and provides quantitative action potentials and the relevant ionic currents (Yamamoto et al., 2021).

Manual patch-clamp and MEA assay, with their respective distinct advantages and limitations, can be used to assess cardiac action potential. However, it is more difficult to apply them

to study 3D cardiac organoids because their user interfaces were developed based on 2D culture (Garg et al., 2018). To measure the action potential of ventricular- and atrial-like cardiomyocytes in cardiac organoids, Drakhlis and colleagues first dissociated cardiac organoids into single cells, seeded them on glass coverslips, and recorded them by patch clamping 1–3 days later (Drakhlis et al., 2021). This allowed demonstration of chamber-specific action potential characteristics and identification of cardiac phenotypes. However, the original electrophysiological characteristics in 3D organoids can be altered after dissociating and culturing them on 2D glass coverslips. Moreover, most MEAs use planar electrodes and are limited to recording only the outer edges of cardiac organoids. A flexible thin-film MEA that bends around organoids has also been developed, but it can still record only the outer surfaces (Yang et al., 2020). To solve this problem, several 3D MEAs using mesh nanoelectronics or stretchable arrays have been recently introduced to study brain and cardiac organoids (Passaro and Stice, 2021). In particular, mesh electrodes allow on-line recording across entire organoids by embedding uniformly spaced

nano-electrodes in the organoids. By integrating these 3D electrodes into cardiac organoids, Li and colleagues were able to determine the presence of synchronized bursting patterns and maturity of cardiomyocytes (Li et al., 2019). Of note, insertion of electrodes into the organoids can affect cardiogenesis, especially in long-term studies.

Besides patch-clamp and MEA, calcium imaging and voltage-sensitive dyes are also widely used in the study of organoid electrophysiology, especially when readouts should be assessed in the intact 3D structure of cardiac organoids at high cellular resolution (Drakhlis et al., 2021; Lee et al., 2020; Passaro and Stice, 2021). Changes in the intercellular calcium concentration by action potential can be monitored through the intensity changes of fluorescent calcium indicators, which enable the study of excitation-contraction coupling and action potential propagation (Eisner et al., 2017; Zhang et al., 2021a). However, calcium imaging alone cannot assess membrane voltage dynamics or individual action potential waveforms that are intrinsic to specific physiological and pathological states (Shroff et al., 2020). Therefore, Lee and colleagues optically mapped the electrophysiological characteristics of cardiac organoids using a voltage-sensitive dye whose intensity changes according to the changes in membrane potential (Lee et al., 2020). They confirmed the presence of ventricular- and atrial-like regions with different action potential durations (APDs) in cardiac organoids. However, due to dye-mediated cytotoxicity and photobleaching, calcium imaging or voltage-sensitive dyes are not suitable methods for long-term culture (Hou et al., 2014). To overcome this limitation, genetically encoded calcium or voltage indicators have been recently utilized in cardiac tissue research (Hou et al., 2014; Shroff et al., 2020). Applying these techniques to cardiac organoids will enable monitoring of electrophysiological properties of cardiac organoids during cardiogenesis over several weeks.

### Metabolism

The main role of cardiac metabolism is to generate ATP necessary for the pumping function of the heart from various energy-providing substrates, including glucose, lactate, and fatty acids. There are many different pathways to generate energy, but more than 90% of the energy comes from mitochondrial oxidative phosphorylation (Taegtmeyer et al., 2016). It is known that when hiPSCs are differentiated into cardiomyocytes like cardiac organoids, their metabolic phenotype shifts from anaerobic glycolysis to mitochondrial respiration, as it also occurs during cardiac development (Gaspar et al., 2014). In fact, the shift from glucose to fatty acid metabolic signature is a hallmark of cardiomyocyte maturation to meet high energy demands (Lin et al., 2017; Ronaldson-Bouchard et al., 2018; Taegtmeyer et al., 2016).

A common method to study the metabolism of cardiac organoids is to measure the concentrations or metabolic fluxes of metabolites that participate in metabolic reactions, including the tricarboxylic acid (TCA) cycle and the mitochondrial electron transport chain occurring in the mitochondria (Lewis-Israeli et al., 2021; Mills et al., 2019) (Figure 3C). The concentrations of metabolites provide valuable information about which metabolic pathways are activated or inhibited. For example, under hypoxia, the concentration of lactate is more than 15 times higher than that of pyruvate (Taegtmeyer et al., 2016). Metabolic fluxes

also show responses to changes in the energy demand of cardiac organoids under both physiological and pathological conditions.

Oxygen consumption rate (OCR) and extracellular acidification rate (ECAR) are most widely measured to study metabolic fluxes. OCR is an indicator of mitochondrial respiration, and ECAR is an indicator of proton excretion by glycolysis. The changes in OCR and ECAR reflect the ATP synthesis and consumption rates, which are closely related to ATP turnover (Ferrick et al., 2008). When comparing the metabolism of cardiac organoids under different conditions by OCR and ECAR, it should be taken into account that the cardiac organoids consist of many distinct cell types. In particular, OCR and ECAR become higher when cardiomyocytes mature (Horikoshi et al., 2019), but each cell type has a different metabolism base level (Zhang et al., 2012). In this sense, the exact cell composition of each organoid must be considered for accurate metabolism comparison.

Cardiac metabolism can also be investigated using the staining of mitochondria. Fluorescence dyes enable analysis of mitochondrial content, mitochondrial fragmentation (balance between fission and fusion), inner mitochondrial membrane potential, and mitochondrial reactive oxygen species (Dorn, 2015; Little et al., 2020).

### Gene expression

Gene expression is a key readout to identify the phenotypes of organoids and to show their physiological status. Among multi-omic approaches, proteomics provides information on protein activity such as the abundance of individual protein species as well as post-translational modifications (Matkovich, 2019). Using bulk proteomic analysis, Hofbauer et al. confirmed the proteome expression signatures of cardiomyocytes and endothelial cells in their organoids (Hofbauer et al., 2021). Because cardiac organoids contain many different cell types, most gene expression studies of cardiac organoids were done by sequencing single cells rather than the bulk population (Figure 3D). Notably, scRNA-seq shows RNA expression of representative cell type markers to precisely reveal cell composition and related properties such as maturation, metabolism, differentiation trajectories, apoptosis, and secretion of ECM (Drakhlis et al., 2021; Paik et al., 2020a; Rossi et al., 2021). scRNA-seq is also more useful than bulk sequencing for analyzing cells present at low numbers and for identifying the underlying mechanisms of biological processes.

The identification of highly expressed ligand-receptor pairs in single-cell transcriptomic information based on known human receptor-ligand pairs (Ramilowski et al., 2015) has enabled the elucidation of intercellular communication and ECM signaling in organoids, which are essential for morphogenesis (Paik et al., 2020a). However, the sequencing depth and coverage of scRNA-seq are not as high as that of bulk sequencing (Chen et al., 2019), so it is important to upgrade the sequencing depth and read length to detect low-abundant transcripts (Rizzetto et al., 2017). Additionally, while droplet-based scRNA-seq recommends loading only up to 10,000 cells per droplet lane (Lafzi et al., 2018), single-cell combinatorial indexing allows for profiling of transcriptomes of more than 2 million cells (Cao et al., 2017, 2019). Recently, there has been the growing use of single-cell multi-omics, which provides not only transcriptomic

but also epigenetic and proteomic analyses (Packer and Trapnell, 2018). However, in the process of sample preparation for single-cell analysis, the organoids are dissociated into single cells, so spatial information of cell-cell and cell-ECM communication within the organoids is lost. In this sense, this technique leaves a gap in organoid research, especially where knowing the location of cells is critical, such as in studies of morphogenesis. To overcome this limitation, spatial transcriptomics, in which location information is retained, has been recently applied to heart tissue research (Asp et al., 2019; Mantri et al., 2021). Although the cost of these cutting-edge assays is decreasing as the technology advances, they are still much more expensive than conventional gene expression assays. Cost reduction in the future as the technologies mature would accelerate organoid research.

### CURRENT CHALLENGES AND FUTURE PERSPECTIVES

As we have shown in this perspective, cardiac organoids that retain the emergent behaviors of the developing heart will have a pivotal role not only in basic science but also in clinical applications such as drug testing and transplantation. However, there are challenges that need to be addressed to practically integrate cardiac organoids into preclinical studies of drug development.

#### Reproducibility of cardiac organoids

Recent studies have shown reproducible modeling of morphogenesis using cardiac organoids. For example, Hofbauer et al. showed that cavities formed in all organoids without foregut endoderm (Hofbauer et al., 2021), and Lewis-Israeli et al. demonstrated that there was no significant difference between organoids derived from three different iPSC lines (Lewis-Israeli et al., 2021). However, as there are still variations in cavity formation (one large cavity versus multiple small cavities) and the overall cardiac organoid shape, both of which are important to model cardiogenesis, we still need to further improve the reproducibility of cardiac organoids, with differentiation being a major issue (Garreta et al., 2021). For this reason, many researchers analyze the results of morphogenesis or differentiation of cardiac organoids using statistical methods (Lee et al., 2020; Silva et al., 2021). Cardiac differentiation has been commonly pursued by activating and inhibiting Wnt/ $\beta$ -catenin signaling at the appropriate times by adding molecules, such as CHIR99021 and IWR-1, to the culture medium. Importantly, there are batch-to-batch variations in cardiac differentiation efficiency in 2D as well as 3D cultures. In 2D monolayers, the efficiency and reproducibility of cardiac differentiation to obtain PSC-derived cardiomyocytes can be substantially improved through glucose starvation, which eliminates non-cardiomyocytes based on the differences in metabolism (Sharma et al., 2015). However, it is not as beneficial for cardiac organoids to apply this very effective method, because morphogenesis can be obtained by harmonious cooperation with non-cardiomyocytes, such as endocardial cells and cardiac fibroblasts.

Most studies add soluble factors such as bFGF and VEGF to induce differentiation into endothelial or epicardial cells in addition to the cardiac differentiation medium. This means that only a finite number of cells in tissue can divide into specific proportions for each cell type corresponding to the relative strength of

each differentiation cue. For example, cardiac progenitor cells around day 6 of cardiac differentiation can become cardiomyocytes or endothelial cells depending on culture conditions such as the concentration of VEGF (Paik et al., 2020b). Since this process is not deterministic, many variations occur during the co-differentiation, and the proportion of cardiomyocytes in 3D cardiac organoids is usually lower than in conventional 2D culture (Drakhlis et al., 2021). Moreover, unwanted cell phenotypes can be obtained in cardiac organoids because pluripotency decreases as the passage number of hiPSCs increases.

Wnt activators and inhibitors used for cardiac differentiation are also used for differentiation into other cell lineages. For example, CHIR99021 is used to differentiate into retina, lung, kidney, and blood vessels, and IWR-1 also induces differentiation into the brain, retina, and blood vessel cells. Even if the same molecules are used, the dominant organ type can vary depending on their concentration and timing of application.

If there is a variation in the stimulation regime between cells in an organoid for the same condition, the organoids may contain many different cell types that have similar differentiation conditions. Notably, molecular distributions inside organoids are mostly nonuniform due to diffusion gradients (Richards et al., 2020). For these reasons, cysts similar to pancreatic or liver organoids sometimes appear in cardiac organoids (Lee et al., 2020), and the heart and gut are often seen together in cardiac organoids (Drakhlis et al., 2021; Rossi et al., 2021; Silva et al., 2021). A method to reduce the chance of cells misleading the differentiation cues would increase the robustness of organoid preparation. Recently, transcription factor (TF)-driven differentiation, which overexpressed specific TFs, was applied to obtain vascularized cortical organoids (Cakir et al., 2019). The same strategy could be applied to cardiac organoids. However, these engineering interventions should be adapted carefully because they could interfere with self-organization to acquire complex emergent behaviors. Furthermore, biochemical gradients in organoids due to diffusion could be reduced by reducing the size of organoids and using bioreactors.

In addition to these exogenous chemical cues, several important factors can influence organoid reproducibility by activating distinct signaling during differentiation. In multi-cellular cardiac organoids, each cell type greatly influences the differentiation, function, and behavior of other cell types in numerous ways, including autocrine, paracrine, and juxtacrine signaling within organoids. For example, Lewis-Israeli et al. reported that chemical cues induced differentiation of mesoderm and cardiac lineages through Wnt activation/inhibition/activation (Lewis-Israeli et al., 2021). However, the cavities and non-cardiomyocytes (including endocardial cells, cardiac fibroblasts, and epicardial cells) emerged spontaneously in response to endogenous signaling. However, if the number of cell types that organoids contain increases, the complexity of cell-to-cell interactions will also increase, which could lead to low reproducibility. Moreover, there are also variations in the mechanical environment within an organoid. Most cardiac organoids are formed through spontaneous aggregation on non-adhesion surfaces, and the traction force exerted by cells into the extracellular space results in a spherical tissue shape. During tissue formation, a stress field is generated inside the organoids along with cell-mediated tissue compaction. In particular, the circumferential stress acting on the cells



in organoids is much higher at the outer edge than in the core region of a spherical organoid (Lee et al., 2019). This non-uniform mechanical stress field can affect cell differentiation and maturation through mechanotransduction (Abilez et al., 2018; Kaushik and Engler, 2014). Therefore, the effect of the number of desired cell types and mechanical stress field due to a tissue shape should be carefully considered to obtain robust cardiac organoids.

### Vascularization

As in any living tissue, cardiac organoids require means to supply nutrients, eliminate waste, and maintain adequate gas exchange, and this is even more critical in highly energetic cells such as cardiac myocytes. In living organisms, vascularization is normally accomplished through the emergence and self-assembly during development of hierarchical vascular networks perfused by blood or blood substitute. Organoids, since they lack vascular perfusion, tend to exhibit some level of necrosis, especially when the tissues attain dimensions in excess of ~1–2 mm in diameter. Recently, methods have been reported for inducing the formation of vascular-like structures that can be identified by expression of endothelial cell markers (e.g., CD31/PECAM-1, CD34). This has been previously reported for brain (Mansour et al., 2018), kidney (Homan et al., 2019), and liver (Guye et al., 2016) organoids, but only recently have methods been developed—through modulation of the Wnt signaling pathway—to produce similar vascular networks in cardiac organoids (Lewis-Israeli et al., 2021). However, true perfusion via the vasculature has not been achieved, and this has become an area of active investigation with a variety of methods under consideration (Zhang et al., 2021b).

### Recapitulating heart features

Recent studies have generated cardiac organoids that successfully captured many important features of the heart, including contractility and the formation of chamber-like cavities that retain the liquid. Cardiac organoids were also made of the major cell types present in the developing heart, such as endocardial cells, cardiomyocytes, cardiac fibroblasts, and epicardial cells. However, at this time, cardiac organoids cannot yet recapitulate some pivotal factors of the native heart. One of the missing features in cardiac organoids is the lining of the cavity with endocardial cells. In addition, the chambers in the native heart are formed from a linear heart tube through a sequence of looping, ballooning, trabeculation, and compaction (Kim et al., 2021). However, these key processes have not yet been seen in cardiac organoids. Unlike some engineered cardiac tissues (Zhao et al., 2019), current cardiac organoids contain chamber-specific (atrial/ventricular) cardiomyocytes without spatial organization and perfusable blood vessels. Notably, the absence of perfusable vasculature limits the size of cardiac organoids, and it is difficult to culture cardiac organoids for a long time as their size increases. Consequently, current cardiac organoids exhibit characteristics similar to those of the fetal rather than adult heart. Adult-like mature cardiac tissues can be obtained as cardiac spheroids via 2D long-term culture before 3D tissue formation (Mattapally et al., 2018; Thomas et al., 2021). However, while these cardiac spheroids beat well, they do not show spontaneous cardiogenesis.

### Cardiac organoid to become mini-hearts

By single-cell analysis, at least 11 different cell types have been identified based on canonical marker genes present in the heart (Litviňuková et al., 2020; Suryawanshi et al., 2020), including ventricular cardiomyocytes (MYH7, MYL2, FHL2), endothelial cells (VWF, PECAM1, CDH5), and pericytes (RGS5, ABCC9, KCNJ8), with more types that may yet be discovered. It would be difficult to reproduce all of these numerous cell types in cardiac organoids. Instead, essential features and complexity of cardiac organoids will vary depending on their application. For example, a mini-heart to study the pathophysiology of COVID-19 mRNA vaccine-related myocarditis would require an immune system, including T helper cells, within cardiac organoids. On the other hand, investigation of arrhythmic cardiomyopathies will require cardiac conduction systems from the sinoatrial node in cardiac organoids. For applications involving the adaptive immune system or those associated with transient ischemic events, vascular perfusion is critical.

There are many difficulties in obtaining multiple cell types in one tissue. High-efficiency differentiation protocols for most cell types are still lacking, and some conditions for different cell types are conflicting. Moreover, the culture medium for multicellular organoids is mostly favorable for the dominant cell type but may not be suitable for all cell types in the organoids. Therefore, it will be necessary to develop technologies that only affect cells within the relevant local microenvironment within a single cardiac organoid through advances in bioengineering and biomaterials science. Current cardiac organoids are unlikely to completely replace animal models in preclinical studies, but the gap between *in vivo* and *in vitro* applications will be narrowed as we overcome these challenges.

### CONCLUSIONS

Researchers working on cardiac organoids have made great strides in developmental biology, pathology, culture methods, and analytical assays, enabling the capture of some key aspects of human cardiogenesis and cardiovascular diseases. Despite these achievements, current limitations of cardiac organoids such as low reproducibility, limited vascularization, and missing essential features of the heart hamper their widespread use in clinical applications, such as drug discovery by pharmaceutical companies and transplantation in patients with myocardial infarction. With the growing interest and demand in recent years, increasing research on cardiac organoids will facilitate improved modeling of the actual human heart. In addition, we believe that cardiac organoid research can transcend current limitations and secure next-generation human heart models through interdisciplinary research in various fields, such as biomaterials, optics, stem cell biology, tissue engineering, and bioengineering, with more active communication among researchers in these fields in the future.

### ACKNOWLEDGMENTS

We would like to acknowledge funding support from the American Heart Association (United States) (grant 20POST35210896 to H.K.), the Wellcome Leap HOPE (United Kingdom) to R.D.K., and National Institutes of Health (United States) (R01 HL113006, R01 HL145676, R01 HL150693, R01 HL163680, R01 HL130020, and UH3 TR002588 to J.C.W.; R01 NS121078 and U54

CA261694 to R.D.K.; and R01 HL076485 and P41 EB027062 to G.V.-N.). Figure 3 was created with BioRender.com.

## DECLARATION OF INTERESTS

J.C.W. is a cofounder of Greenstone Biosciences, and G.V.-N. is a cofounder of Tara Biosystems. R.D.K. is a cofounder of AIM Biotech and receives research support from Biogen and Amgen. However, J.C.W., G.V.-N., and R.D.K. have no competing interests, as the work presented here is independent. The other authors report no conflicts.

## REFERENCES

- Abilez, O.J., Tzatzalos, E., Yang, H., Zhao, M.-T., Jung, G., Zöllner, A.M., Tiburcy, M., Riegler, J., Matsa, E., Shukla, P., et al. (2018). Passive Stretch Induces Structural and Functional Maturation of Engineered Heart Muscle as Predicted by Computational Modeling. *Stem Cells* 36, 265–277.
- Asp, M., Giacomello, S., Larsson, L., Wu, C., Fürth, D., Qian, X., Wårdell, E., Custodio, J., Reimegård, J., Salmén, F., et al. (2019). A Spatiotemporal Organ-Wide Gene Expression and Cell Atlas of the Developing Human Heart. *Cell* 179, 1647–1660.e19.
- Behrens, A.N., Iacovino, M., Lohr, J.L., Ren, Y., Zierold, C., Harvey, R.P., Kyba, M., Garry, D.J., and Martin, C.M. (2013). Nkx2-5 mediates differential cardiac differentiation through interaction with Hoxa10. *Stem Cells Dev.* 22, 2211–2220.
- Bergmann, O., Bhardwaj, R.D., Bernard, S., Zdunek, S., Barnabé-Heider, F., Walsh, S., Zupicich, J., Alkass, K., Buchholz, B.A., Druid, H., et al. (2009). Evidence for cardiomyocyte renewal in humans. *Science* 324, 98–102.
- Cakir, B., Xiang, Y., Tanaka, Y., Kural, M.H., Parent, M., Kang, Y.-J., Chapeton, K., Patterson, B., Yuan, Y., He, C.-S., et al. (2019). Engineering of human brain organoids with a functional vascular-like system. *Nat. Methods* 16, 1169–1175.
- Cao, J., Packer, J.S., Ramani, V., Cusanovich, D.A., Huynh, C., Daza, R., Qiu, X., Lee, C., Furlan, S.N., Steemers, F.J., et al. (2017). Comprehensive single-cell transcriptional profiling of a multicellular organism. *Science* 357, 661–667.
- Cao, J., Spielmann, M., Qiu, X., Huang, X., Ibrahim, D.M., Hill, A.J., Zhang, F., Mundlos, S., Christiansen, L., Steemers, F.J., et al. (2019). The single-cell transcriptional landscape of mammalian organogenesis. *Nature* 566, 496–502.
- Chen, V.C., Ye, J., Shukla, P., Hua, G., Chen, D., Lin, Z., Liu, J.C., Chai, J., Gold, J., Wu, J., et al. (2015). Development of a scalable suspension culture for cardiac differentiation from human pluripotent stem cells. *Stem Cell Res. (Amst.)* 15, 365–375.
- Chen, G., Ning, B., and Shi, T. (2019). Single-Cell RNA-Seq Technologies and Related Computational Data Analysis. *Front. Genet.* 10, 317.
- Cho, S., Lee, C., Skylar-Scott, M.A., Heilshorn, S.C., and Wu, J.C. (2021). Reconstructing the heart using iPSCs: Engineering strategies and applications. *J. Mol. Cell. Cardiol.* 157, 56–65.
- Cortez, A.R., Poling, H.M., Brown, N.E., Singh, A., Mahe, M.M., and Helmrath, M.A. (2018). Transplantation of human intestinal organoids into the mouse mesentery: A more physiologic and anatomic engraftment site. *Surgery* 164, 643–650.
- Dorn, G.W., 2nd (2015). Mitochondrial dynamism and heart disease: changing shape and shaping change. *EMBO Mol. Med.* 7, 865–877.
- Drakhlis, L., Biswanath, S., Farr, C.-M., Lupanow, V., Teske, J., Ritzenhoff, K., Franke, A., Manstein, F., Bolesani, E., Kempf, H., et al. (2021). Human heart-forming organoids recapitulate early heart and foregut development. *Nat. Biotechnol.* 39, 737–746.
- Eisner, D.A., Caldwell, J.L., Kistamás, K., and Trafford, A.W. (2017). Calcium and Excitation-Contraction Coupling in the Heart. *Circ. Res.* 121, 181–195.
- Ferrick, D.A., Neilson, A., and Beeson, C. (2008). Advances in measuring cellular bioenergetics using extracellular flux. *Drug Discov. Today* 13, 268–274.
- Funakoshi, S., Miki, K., Takaki, T., Okubo, C., Hatani, T., Chonabayashi, K., Nishikawa, M., Takei, I., Oishi, A., Narita, M., et al. (2016). Enhanced engraftment, proliferation, and therapeutic potential in heart using optimized human iPSC-derived cardiomyocytes. *Sci. Rep.* 6, 19111.
- Gao, J., Liao, C., Liu, S., Xia, T., and Jiang, G. (2021). Nanotechnology: new opportunities for the development of patch-clamps. *J. Nanobiotechnology* 19, 97.
- Garg, P., Garg, V., Shrestha, R., Sanguinetti, M.C., Kamp, T.J., and Wu, J.C. (2018). Human Induced Pluripotent Stem Cell-Derived Cardiomyocytes as Models for Cardiac Channelopathies: A Primer for Non-Electrophysiologists. *Circ. Res.* 123, 224–243.
- Garreta, E., Kamm, R.D., Chuva de Sousa Lopes, S.M., Lancaster, M.A., Weiss, R., Treppe, X., Hyun, I., and Montserrat, N. (2021). Rethinking organoid technology through bioengineering. *Nat. Mater.* 20, 145–155.
- Gaspar, J.A., Doss, M.X., Hengstler, J.G., Cadenas, C., Hescheler, J., and Sachinidis, A. (2014). Unique metabolic features of stem cells, cardiomyocytes, and their progenitors. *Circ. Res.* 114, 1346–1360.
- Gopal, S., Rodrigues, A.L., and Dordick, J.S. (2020). Exploiting CRISPR Cas9 in Three-Dimensional Stem Cell Cultures to Model Disease. *Front. Bioeng. Biotechnol.* 8, 692.
- Gu, Y., Gorelik, J., Spohr, H.A., Shevchuk, A., Lab, M.J., Harding, S.E., Vodyanoy, I., Klennerman, D., and Korchev, Y.E. (2002). High-resolution scanning patch-clamp: new insights into cell function. *FASEB J.* 16, 748–750.
- Guye, P., Ebrahimkhani, M.R., Kipniss, N., Velazquez, J.J., Schoenfeld, E., Kiani, S., Griffith, L.G., and Weiss, R. (2016). Genetically engineering self-organization of human pluripotent stem cells into a liver bud-like tissue using Gata6. *Nat. Commun.* 7, 10243.
- Hayes, H.B., Nicolini, A.M., Arrowood, C.A., Chvatal, S.A., Wolfson, D.W., Cho, H.C., Sullivan, D.D., Chal, J., Fermini, B., Clements, M., et al. (2019). Novel method for action potential measurements from intact cardiac monolayers with multiwell microelectrode array technology. *Sci. Rep.* 9, 11893.
- Hofbauer, P., Jahnel, S.M., Papai, N., Giesshammer, M., Deyett, A., Schmidt, C., Penc, M., Tavernini, K., Grdseloff, N., Meledeth, C., et al. (2021). Cardioids reveal self-organizing principles of human cardiogenesis. *Cell* 184, 3299–3317.e22.
- Homan, K.A., Gupta, N., Kroll, K.T., Kolesky, D.B., Skylar-Scott, M., Miyoshi, T., Mau, D., Valerius, M.T., Ferrante, T., Bonventre, J.V., et al. (2019). Flow-enhanced vascularization and maturation of kidney organoids in vitro. *Nat. Methods* 16, 255–262.
- Horikoshi, Y., Yan, Y., Terashvili, M., Wells, C., Horikoshi, H., Fujita, S., Bosnjak, Z.J., and Bai, X. (2019). Fatty Acid-Treated Induced Pluripotent Stem Cell-Derived Human Cardiomyocytes Exhibit Adult Cardiomyocyte-Like Energy Metabolism Phenotypes. *Cells* 8, 1095.
- Hou, J.H., Kralj, J.M., Douglass, A.D., Engert, F., and Cohen, A.E. (2014). Simultaneous mapping of membrane voltage and calcium in zebrafish heart in vivo reveals chamber-specific developmental transitions in ionic currents. *Front. Physiol.* 5, 344.
- Huebsch, N., Loskill, P., Mandegar, M.A., Marks, N.C., Sheehan, A.S., Ma, Z., Mathur, A., Nguyen, T.N., Yoo, J.C., Judge, L.M., et al. (2015). Automated Video-Based Analysis of Contractility and Calcium Flux in Human-Induced Pluripotent Stem Cell-Derived Cardiomyocytes Cultured over Different Spatial Scales. *Tissue Eng. Part C Methods* 21, 467–479.
- Kapalczyńska, M., Kolenda, T., Przybyła, W., Zajęczkowska, M., Teresiak, A., Filas, V., Ibbes, M., Bliźniak, R., Łuczewski, Ł., and Lamperska, K. (2018). 2D and 3D cell cultures - a comparison of different types of cancer cell cultures. *Arch. Med. Sci.* 14, 910–919.
- Kaushik, G., and Engler, A.J. (2014). From Stem Cells to Cardiomyocytes: The Role of Forces in Cardiac Maturation, Aging, and Disease. In *Prog. Mol. Biol. Transl. Sci.*, 126, A.J. Engler and S. Kumar, eds. (Academic Press), pp. 219–242.
- Kim, H., Wang, M., and Paik, D.T. (2021). Endothelial-Myocardial Angiocrine Signaling in Heart Development. *Front. Cell Dev. Biol.* 9, 697130.
- Kupfer, M.E., Lin, W.-H., Ravikumar, V., Qiu, K., Wang, L., Gao, L., Bhuiyan, D.B., Lenz, M., Ai, J., Mahutga, R.R., et al. (2020). In Situ Expansion, Differentiation, and Electromechanical Coupling of Human Cardiac Muscle in a 3D Bioprinted, Chambered Organoid. *Circ. Res.* 127, 207–224.

Lafzi, A., Moutinho, C., Picelli, S., and Heyn, H. (2018). Tutorial: guidelines for the experimental design of single-cell RNA sequencing studies. *Nat. Protoc.* **13**, 2742–2757.

Lee, W., Kalashnikov, N., Mok, S., Halaoui, R., Kuzmin, E., Putnam, A.J., Takayama, S., Park, M., McCaffrey, L., Zhao, R., et al. (2019). Dispersible hydrogel force sensors reveal patterns of solid mechanical stress in multicellular spheroid cultures. *Nat. Commun.* **10**, 144.

Lee, J., Sutani, A., Kaneko, R., Takeuchi, J., Sasano, T., Kohda, T., Ihara, K., Takahashi, K., Yamazoe, M., Morio, T., et al. (2020). In vitro generation of functional murine heart organoids via FGF4 and extracellular matrix. *Nat. Commun.* **11**, 4283.

Lewis-Israeli, Y.R., Wasserman, A.H., Gabalski, M.A., Volmert, B.D., Ming, Y., Ball, K.A., Yang, W., Zou, J., Ni, G., Pajares, N., et al. (2021). Self-assembling human heart organoids for the modeling of cardiac development and congenital heart disease. *Nat. Commun.* **12**, 5142.

Li, Q., Nan, K., Le Floch, P., Lin, Z., Sheng, H., Blum, T.S., and Liu, J. (2019). Cyborg Organoids: Implantation of Nanoelectronics via Organogenesis for Tissue-Wide Electrophysiology. *Nano Lett.* **19**, 5781–5789.

Lin, E., and Alessio, A. (2009). What are the basic concepts of temporal, contrast, and spatial resolution in cardiac CT? *J. Cardiovasc. Comput. Tomogr.* **3**, 403–408.

Lin, B., Lin, X., Stachel, M., Wang, E., Luo, Y., Lader, J., Sun, X., Delmar, M., and Bu, L. (2017). Culture in Glucose-Depleted Medium Supplemented with Fatty Acid and 3,3',5-Triiodo-L-Thyronine Facilitates Purification and Maturation of Human Pluripotent Stem Cell-Derived Cardiomyocytes. *Front. Endocrinol.* **8**, 253.

Little, A.C., Kovalenko, I., Goo, L.E., Hong, H.S., Kerk, S.A., Yates, J.A., Purohit, V., Lombard, D.B., Merajver, S.D., and Lyssiotis, C.A. (2020). High-content fluorescence imaging with the metabolic flux assay reveals insights into mitochondrial properties and functions. *Commun Biol* **3**, 271.

Litviňuková, M., Talavera-López, C., Maatz, H., Reichart, D., Worth, C.L., Lindberg, E.L., Kanda, M., Polanski, K., Heinig, M., Lee, M., et al. (2020). Cells of the adult human heart. *Nature* **588**, 466–472.

Liu, C., Feng, X., Li, G., Gokulnath, P., and Xiao, J. (2022). Generating 3D human cardiac constructs from pluripotent stem cells. *EBioMedicine* **76**, 103813.

Maltsev, V.A., Rohwedel, J., Hescheler, J., and Wobus, A.M. (1993). Embryonic stem cells differentiate in vitro into cardiomyocytes representing sinus nodal, atrial and ventricular cell types. *Mech. Dev.* **44**, 41–50.

Mannhardt, I., Saleem, U., Benzin, A., Schulze, T., Klampe, B., Eschenhagen, T., and Hansen, A. (2017). Automated Contraction Analysis of Human Engineered Heart Tissue for Cardiac Drug Safety Screening. *J. Vis. Exp.* (122), e55461.

Mansour, A.A., Gonçalves, J.T., Bloyd, C.W., Li, H., Fernandes, S., Quang, D., Johnston, S., Parylak, S.L., Jin, X., and Gage, F.H. (2018). An in vivo model of functional and vascularized human brain organoids. *Nat. Biotechnol.* **36**, 432–441.

Mantri, M., Scuderì, G.J., Abedini-Nassab, R., Wang, M.F.Z., McKellar, D., Shi, H., Grodner, B., Butcher, J.T., and De Vlaminc, I. (2021). Spatiotemporal single-cell RNA sequencing of developing chicken hearts identifies interplay between cellular differentiation and morphogenesis. *Nat. Commun.* **12**, 1771.

Marsee, A., Roos, F.J.M., Verstegen, M.M.A., Gehart, H., de Koning, E., Le-maigre, F., Forbes, S.J., Peng, W.C., Huch, M., Takebe, T., et al.; HPB Organoid Consortium (2021). Building consensus on definition and nomenclature of hepatic, pancreatic, and biliary organoids. *Cell Stem Cell* **28**, 816–832.

Matkovich, S.J. (2019). Multiomic approaches to delineate the pathogenesis of cardiac disease. *Curr. Opin. Cardiol.* **34**, 246–253.

Mattapally, S., Zhu, W., Fast, V.G., Gao, L., Worley, C., Kannappan, R., Borovjagin, A.V., and Zhang, J. (2018). Spheroids of cardiomyocytes derived from human-induced pluripotent stem cells improve recovery from myocardial injury in mice. *Am. J. Physiol. Heart Circ. Physiol.* **315**, H327–H339.

Mills, R.J., Titmarsh, D.M., Koenig, X., Parker, B.L., Ryall, J.G., Quaife-Ryan, G.A., Voges, H.K., Hodson, M.P., Ferguson, C., Drowley, L., et al. (2017). Functional screening in human cardiac organoids reveals a metabolic mechanism for cardiomyocyte cell cycle arrest. *Proc. Natl. Acad. Sci. USA* **114**, E8372–E8381.

Mills, R.J., Parker, B.L., Quaife-Ryan, G.A., Voges, H.K., Needham, E.J., Borot, A., Ding, M., Andersson, H., Polla, M., Elliott, D.A., et al. (2019). Drug Screening in Human PSC-Cardiac Organoids Identifies Pro-proliferative Compounds Acting via the Mevalonate Pathway. *Cell Stem Cell* **24**, 895–907.e6.

Ming, Y., Hao, S., Wang, F., Lewis-Israeli, Y.R., Volmert, B.D., Xu, Z., Goestenkors, A., Aguirre, A., and Zhou, C. (2022). Longitudinal Morphological and Functional Characterization of Human Heart Organoids Using Optical Coherence Tomography. *Biosens. Bioelectron.* **207**, 114136, 2022.01.19.476972.

Müller, J., Ballini, M., Livi, P., Chen, Y., Radivojevic, M., Shadmani, A., Viswam, V., Jones, I.L., Fiscella, M., Diggelmann, R., et al. (2015). High-resolution CMOS MEA platform to study neurons at subcellular, cellular, and network levels. *Lab Chip* **15**, 2767–2780.

Mummery, C.L., Zhang, J., Ng, E.S., Elliott, D.A., Elefanti, A.G., and Kamp, T.J. (2012). Differentiation of human embryonic stem cells and induced pluripotent stem cells to cardiomyocytes: a methods overview. *Circ. Res.* **111**, 344–358.

Navarrete, E.G., Liang, P., Lan, F., Sanchez-Freire, V., Simmons, C., Gong, T., Sharma, A., Burridge, P.W., Patlolla, B., Lee, A.S., et al. (2013). Screening drug-induced arrhythmia using human induced pluripotent stem cell-derived cardiomyocytes and low-impedance microelectrode arrays. *Circulation* **128** (11, Suppl 1), S3–S13.

Neofytou, E., O'Brien, C.G., Couture, L.A., and Wu, J.C. (2015). Hurdles to clinical translation of human induced pluripotent stem cells. *J. Clin. Invest.* **125**, 2551–2557.

Oikonomopoulos, A., Kitani, T., and Wu, J.C. (2018). Pluripotent Stem Cell-Derived Cardiomyocytes as a Platform for Cell Therapy Applications: Progress and Hurdles for Clinical Translation. *Mol. Ther.* **26**, 1624–1634.

Packer, J., and Trapnell, C. (2018). Single-Cell Multi-omics: An Engine for New Quantitative Methods of Gene Regulation. *Trends Genet.* **34**, 653–665.

Paik, D.T., Cho, S., Tian, L., Chang, H.Y., and Wu, J.C. (2020a). Single-cell RNA sequencing in cardiovascular development, disease and medicine. *Nat. Rev. Cardiol.* **17**, 457–473.

Paik, D.T., Chandy, M., and Wu, J.C. (2020b). Patient and Disease-Specific Induced Pluripotent Stem Cells for Discovery of Personalized Cardiovascular Drugs and Therapeutics. *Pharmacol. Rev.* **72**, 320–342.

Pashmforoush, M., Lu, J.T., Chen, H., Amand, T.S., Kondo, R., Pradervand, S., Evans, S.M., Clark, B., Feramisco, J.R., Giles, W., et al. (2004). Nkx2-5 pathways and congenital heart disease; loss of ventricular myocyte lineage specification leads to progressive cardiomyopathy and complete heart block. *Cell* **117**, 373–386.

Passaro, A.P., and Stice, S.L. (2021). Electrophysiological Analysis of Brain Organoids: Current Approaches and Advancements. *Front. Neurosci.* **14**, 622137.

Polonchuk, L., Chabria, M., Badi, L., Hoflack, J.-C., Figtree, G., Davies, M.J., and Gentile, C. (2017). Cardiac spheroids as promising in vitro models to study the human heart microenvironment. *Sci. Rep.* **7**, 7005.

Pushp, P., Nogueira, D.E.S., Rodrigues, C.A.V., Ferreira, F.C., Cabral, J.M.S., and Gupta, M.K. (2021). A Concise Review on Induced Pluripotent Stem Cell-Derived Cardiomyocytes for Personalized Regenerative Medicine. *Stem Cell Rev Rep* **17**, 748–776.

Ramilowski, J.A., Goldberg, T., Harshbarger, J., Kloppmann, E., Lizio, M., Sataogam, V.P., Itoh, M., Kawaji, H., Carninci, P., Rost, B., and Forrest, A.R. (2015). A draft network of ligand-receptor-mediated multicellular signalling in human. *Nat. Commun.* **6**, 7866.

Richards, D.J., Li, Y., Kerr, C.M., Yao, J., Beeson, G.C., Coyle, R.C., Chen, X., Jia, J., Damon, B., Wilson, R., et al. (2020). Human cardiac organoids for the modelling of myocardial infarction and drug cardiotoxicity. *Nat. Biomed. Eng.* **4**, 446–462.

Rizzetto, S., Eltahla, A.A., Lin, P., Bull, R., Lloyd, A.R., Ho, J.W.K., Venturi, V., and Luciani, F. (2017). Impact of sequencing depth and read length on single cell RNA sequencing data of T cells. *Sci. Rep.* **7**, 12781.

Romagnuolo, R., Masoudpour, H., Porta-Sánchez, A., Qiang, B., Barry, J., Laskary, A., Qi, X., Massé, S., Magtibay, K., Kawajiri, H., et al. (2019). Human Embryonic Stem Cell-Derived Cardiomyocytes Regenerate the Infarcted Pig Heart but Induce Ventricular Tachyarrhythmias. *Stem Cell Reports* **12**, 967–981.

- Ronaldson-Bouchard, K., Ma, S.P., Yeager, K., Chen, T., Song, L., Sirabella, D., Morikawa, K., Teles, D., Yazawa, M., and Vunjak-Novakovic, G. (2018). Advanced maturation of human cardiac tissue grown from pluripotent stem cells. *Nature* 556, 239–243.
- Rossi, G., Broguiere, N., Miyamoto, M., Boni, A., Guiet, R., Girgin, M., Kelly, R.G., Kwon, C., and Lutolf, M.P. (2021). Capturing Cardiogenesis in Gastruloids. *Cell Stem Cell* 28, 230–240.e6.
- Schermelleh, L., Heintzmann, R., and Leonhardt, H. (2010). A guide to super-resolution fluorescence microscopy. *J. Cell Biol.* 190, 165–175.
- Sharma, P., and Gentile, C. (2021). Cardiac Spheroids as in vitro Bio-engineered Heart Tissues to Study Human Heart Pathophysiology. *J. Vis. Exp.* (167), e61962.
- Sharma, A., Li, G., Rajarajan, K., Hamaguchi, R., Burrige, P.W., and Wu, S.M. (2015). Derivation of highly purified cardiomyocytes from human induced pluripotent stem cells using small molecule-modulated differentiation and subsequent glucose starvation. *J. Vis. Exp.* (97), e52628.
- Shroff, S.N., Das, S.L., Tseng, H.A., Noueihed, J., Fernandez, F., White, J.A., Chen, C.S., and Han, X. (2020). Voltage Imaging of Cardiac Cells and Tissue Using the Genetically Encoded Voltage Sensor Archon1. *iScience* 23, 100974.
- Silva, A.C., Matthys, O.B., Joy, D.A., Kaus, M.A., Natarajan, V., Lai, M.H., Turaga, D., Blair, A.P., Alexanian, M., Bruneau, B.G., and McDevitt, T.C. (2021). Co-emergence of cardiac and gut tissues promotes cardiomyocyte maturation within human iPSC-derived organoids. *Cell Stem Cell* 28, 2137–2152.e6.
- Smith, C.L. (2011). Basic confocal microscopy. *Curr. Protoc. Neurosci. Chapter 2*, 2.
- Soldatow, V.Y., Lecluyse, E.L., Griffith, L.G., and Rusyn, I. (2013). *In vitro* models for liver toxicity testing. *Toxicol. Res. (Camb.)* 2, 23–39.
- Suryawanshi, H., Clancy, R., Morozov, P., Halushka, M.K., Buyon, J.P., and Tuschl, T. (2020). Cell atlas of the foetal human heart and implications for autoimmune-mediated congenital heart block. *Cardiovasc. Res.* 116, 1446–1457.
- Taegtmeyer, H., Young, M.E., Lopaschuk, G.D., Abel, E.D., Brunengraber, H., Darley-Usmar, V., Des Rosiers, C., Gerszten, R., Glatz, J.F., Griffin, J.L., et al.; American Heart Association Council on Basic Cardiovascular Sciences (2016). Assessing Cardiac Metabolism: A Scientific Statement From the American Heart Association. *Circ. Res.* 118, 1659–1701.
- Thomas, D., Kim, H., Lopez, N., and Wu, J.C. (2021). Fabrication of 3D Cardiac Microtissue Arrays using Human iPSC-Derived Cardiomyocytes, Cardiac Fibroblasts, and Endothelial Cells. *J. Vis. Exp.* (169), e61879.
- Ueda, H.R., Ertürk, A., Chung, K., Gradinaru, V., Chédotal, A., Tomancak, P., and Keller, P.J. (2020). Tissue clearing and its applications in neuroscience. *Nat. Rev. Neurosci.* 21, 61–79.
- Varzideh, F., Pahlavan, S., Ansari, H., Halvaei, M., Kostin, S., Feiz, M.-S., Latifi, H., Aghdami, N., Braun, T., and Baharvand, H. (2019). Human cardiomyocytes undergo enhanced maturation in embryonic stem cell-derived organoid transplants. *Biomaterials* 192, 537–550.
- Voges, H.K., Mills, R.J., Elliott, D.A., Parton, R.G., Porrello, E.R., and Hudson, J.E. (2017). Development of a human cardiac organoid injury model reveals innate regenerative potential. *Development* 144, 1118–1127.
- Wnorowski, A., Yang, H., and Wu, J.C. (2019). Progress, obstacles, and limitations in the use of stem cells in organ-on-a-chip models. *Adv. Drug Deliv. Rev.* 140, 3–11.
- Yamamoto, Y., Hirose, S., Wuriyanghai, Y., Yoshinaga, D., and Makiyama, T. (2021). Electrophysiological Analysis of hiPSC-Derived Cardiomyocytes Using a Patch-Clamp Technique. *Methods Mol. Biol.* 2320, 121–133.
- Yang, W., Fan, Q.H., and Li, W. (2020). A Fully Transparent, Flexible  $\mu$ ECOG Array Based on Highly Conductive and Anti-reflective PEDOT:PSS-ITO-Ag-ITO Thin Films. In 2020 IEEE 15th International Conference on Nano/Micro Engineered and Molecular System (NEMS), pp. 124–129.
- Zhang, J., Nuebel, E., Wisidagama, D.R.R., Setoguchi, K., Hong, J.S., Van Horn, C.M., Imam, S.S., Vergnes, L., Malone, C.S., Koehler, C.M., and Teitell, M.A. (2012). Measuring energy metabolism in cultured cells, including human pluripotent stem cells and differentiated cells. *Nat. Protoc.* 7, 1068–1085.
- Zhang, F., Wang, L., Li, Y., Liu, W., Duan, F., Huang, R., Chen, X., Chang, S.C.-N., Du, Y., and Na, J. (2017). Optimizing mesoderm progenitor selection and three-dimensional microniche culture allows highly efficient endothelial differentiation and ischemic tissue repair from human pluripotent stem cells. *Stem Cell Res. Ther.* 8, 6.
- Zhang, J.Z., Termglinchan, V., Shao, N.-Y., Itzhaki, I., Liu, C., Ma, N., Tian, L., Wang, V.Y., Chang, A.C.Y., Guo, H., et al. (2019). A Human iPSC Double-Reporter System Enables Purification of Cardiac Lineage Subpopulations with Distinct Function and Drug Response Profiles. *Cell Stem Cell* 24, 802–811.e5.
- Zhang, J.Z., Zhao, S.R., Tu, C., Pang, P., Zhang, M., and Wu, J.C. (2021a). Protocol to measure contraction, calcium, and action potential in human-induced pluripotent stem cell-derived cardiomyocytes. *STAR Protoc* 2, 100859.
- Zhang, S., Wan, Z., and Kamm, R.D. (2021b). Vascularized organoids on a chip: strategies for engineering organoids with functional vasculature. *Lab Chip* 21, 473–488.
- Zhao, Y., Rafatian, N., Feric, N.T., Cox, B.J., Aschar-Sobbi, R., Wang, E.Y., Aggarwal, P., Zhang, B., Conant, G., Ronaldson-Bouchard, K., et al. (2019). A Platform for Generation of Chamber-Specific Cardiac Tissues and Disease Modeling. *Cell* 176, 913–927.e18.
- Zimmermann, W.-H., Schneiderbanger, K., Schubert, P., Didié, M., Münzel, F., Heubach, J.F., Kostin, S., Neuhuber, W.L., and Eschenhagen, T. (2002). Tissue engineering of a differentiated cardiac muscle construct. *Circ. Res.* 90, 223–230.